



# Cloud Computing Appliance



The Sumo Cloud Computing Appliances combine powerful computing, low power consumption and fanless operation with the AMD Fusion™ CPU and AMD Hudson GPU, integrated into a compact and robust enclosure for flexibility in location and application. The compact design of the Sumo Cloud Computing Appliance is complemented by 4 USB, 2 serial ports, audio and display ports with available wireless option. The integrated optional smart card reader enables enhanced security, and a selection of operating software offers optimal user experience for Internet/ Intranet access and server-based computing.

## Features

- ▶ Support for major computing protocols, Citrix ICA, Microsoft RDP and VMware
- ▶ High performance, low power consumption
- ▶ Robust and compact design; fanless without moving parts
- ▶ PXE boot to Linux OS
- ▶ Customisable for OS/BIOS
- ▶ Comprehensive remote device administration through the Device Management software
- ▶ Optional WLAN communication
- ▶ 4 USB, 2 COM ports, audio / video ports
- ▶ VESA mountable
- ▶ Optional Omnikey smart card reader



# CloudComputing Appliance

## Applications

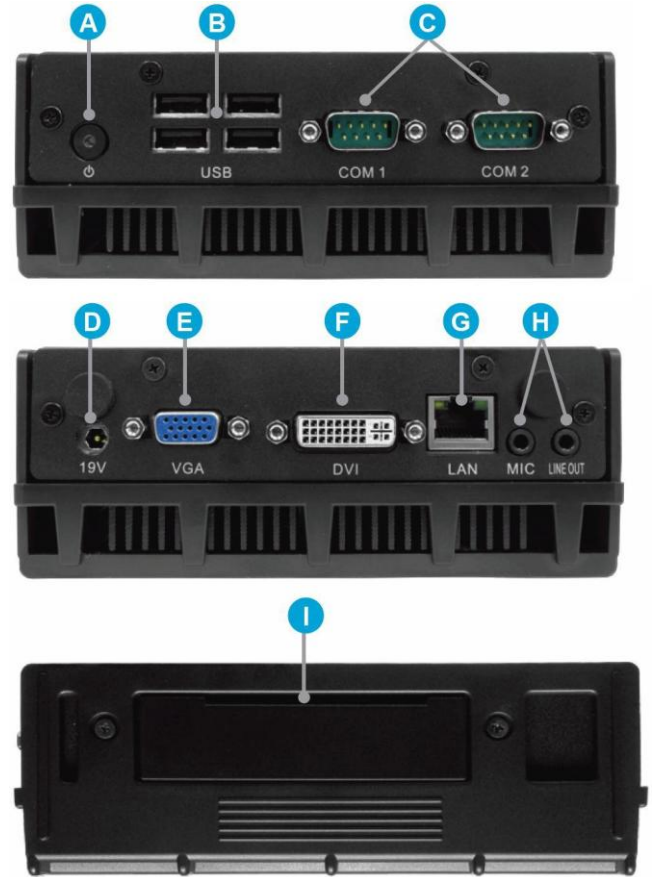
The SUMO ST1350CAS and ST1350CAD are suited to many industry deployments including:

- ▶ Cloud Computing
- ▶ Transportation and Warehousing
- ▶ Healthcare
- ▶ Education
- ▶ Manufacturing
- ▶ Finance
- ▶ Retail

## Major Options

- ▶ Internal 802.11 WiFi a/b/g/n with CCX extensions support and dipole antenna
- ▶ Internal Omnikey Smart Card Reader Module
- ▶ 3 Year Extended Warranty
- ▶ TPM 1.2 Support

## I/O Ports

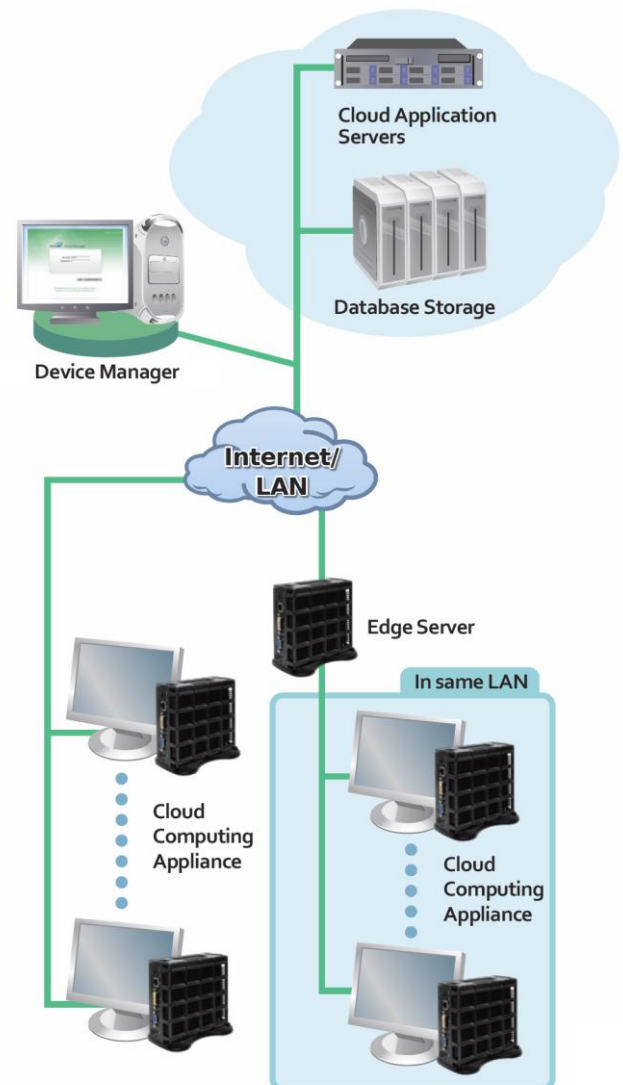


- |                                       |                      |
|---------------------------------------|----------------------|
| <b>A</b> Power Button                 | <b>B</b> USB 2.0 (4) |
| <b>C</b> RS232 COM Port (2)           | <b>D</b> DC-in       |
| <b>E</b> VGA Port                     | <b>F</b> DVI Port    |
| <b>G</b> Ethernet Port                | <b>H</b> Audio Jacks |
| <b>I</b> Smart Card Reader (Optional) |                      |

# CloudComputing Appliance

## Device Manager 2.0 Features and Benefits

- ▶ Update OS / BIOS / Client Agent via FTP, USB or a network drive
- ▶ Client devices can be registered to the server automatically within the same LAN
- ▶ File transmission between server and clients
- ▶ Remotely execute applications at the client side
- ▶ Remotely power on / off clients via RTC (Real-Time Clock) and WOL (Wake On LAN)
- ▶ Monitor / manage device asset information, including hardware, software and external peripherals
- ▶ Assign tasks with multiple grouped commands to client devices
- ▶ Tasks can be dispatched to client devices for execution without a network connections
- ▶ Schedule, send and execute commands to multiple devices at the same time
- ▶ Monitor task execution status and results
- ▶ Remotely login to clients via VNC
- ▶ Integrated software solution to include all components from server to clients
- ▶ Watchdog to maximise software stability
- ▶ Microsoft® Active Directory® support for account management
- ▶ Privilege settings for accounts and roles, also for each command for every device group





# Cloud Computing Appliance

## Specification

### ▶ Operating Systems

Zero Client PXE boot to Linux  
 ST1350CAS: Microsoft® Windows® CE  
 Microsoft® Windows® XP Embedded  
 Microsoft® Windows® Embedded Standard 7

### ▶ Processor

ST1350CAS: AMD Fusion™ Single Core 1.2GHz  
 ST1350CAD: AMD Fusion™ Dual Core 1.6GHz  
 32 Bit and 64 Bit Support  
 AMD Hudson M1 Chipset

### ▶ Memory (RAM)

1GB, 2GB or 4GB

### ▶ Storage

Zero Client with no storage and PXE Boot to Linux  
 ST1350CAS: 8GB Internal Flash Module  
 ST1350CAD: 8GB, 32GB or 64GB Internal Flash Module

### ▶ Display

VGA and DVI output  
 Up to 1920 x 1080 Resolution

### ▶ Controls and Connectivity

Omnikey smart card reader (Optional)  
 1 x VGA  
 1 x DVI  
 1 x Microphone Input  
 1 x Line Out  
 4 x USB 2.0 Ports  
 2 x Serial / COM ports  
 1 x RJ45 Ethernet (10/100/1000MB BaseT LAN)  
 WiFi 802.11 a/b/g/n (Optional)  
 1 x DC-in 1.7mm

### ▶ Expansion

PCI Express

### ▶ Included Accessories

VESA Mounting Bracket  
 ST1350CAD: Stand

### ▶ Physical Dimensions

H x W x D  
 ST1350CAS: 25 x 148 x 165.1mm  
 ST1350CAS: 0.98 x 5.82 x 6.5in  
 ST1350CAD: 55 x 148 x 165.1mm  
 ST1350CAD: 2.16 x 5.82 x 6.5in

### ▶ Weight

ST1350CAS: 824 g (1.82 lbs)  
 ST1350CAD: 1316 g (2.9 lbs)

### ▶ Power

Adapter: AC/DC  
 Input: 100-240V AC  
 Output: 19V DC  
 Power Cords: UK, EU, North America, China

### ▶ Operating Environment

Temperature: 0° – 40° C  
 Storage: -20° – 60° C  
 Humidity: 0% - 90% non-condensing

### ▶ Enclosure

Aluminium + Steel

### ▶ Regulatory Compliance

FCC Class B, CE, C-Tick, RoHS compliant



**SUMO**  
 Masters of Technology

For more information, including pricing, availability and detailed features please look at our web site at [www.sumotech.com](http://www.sumotech.com) or email [sales@sumotech.com](mailto:sales@sumotech.com)

SUMO Technologies Ltd, Manor Chambers, Marygate, YORK YO30 7BH  
 Tel: +44 (0) 1904 670670 Fax: +44 (0) 1904 670570

All specifications are subject to change without notice.

SUMO, Masters of Technology, STCA1350S and STCA1350D are trademarks of SUMO Technologies Ltd. Microsoft Windows XP, Microsoft Windows XP Tablet PC Edition and Microsoft Windows XP Embedded are registered trademarks of Microsoft Corporation. All other products and services are trademarks or service marks of their respective companies, and are acknowledged. E&OE